

Welcome to Kings County

*land of
Orchards, Vineyards
& Tides*



www.county.kings.ns.ca

Large Scale Wind Turbines



File #: P12-01

January 10, 2012

Image released under Creative Commons Attribution license by Patrick Finnegan



Background

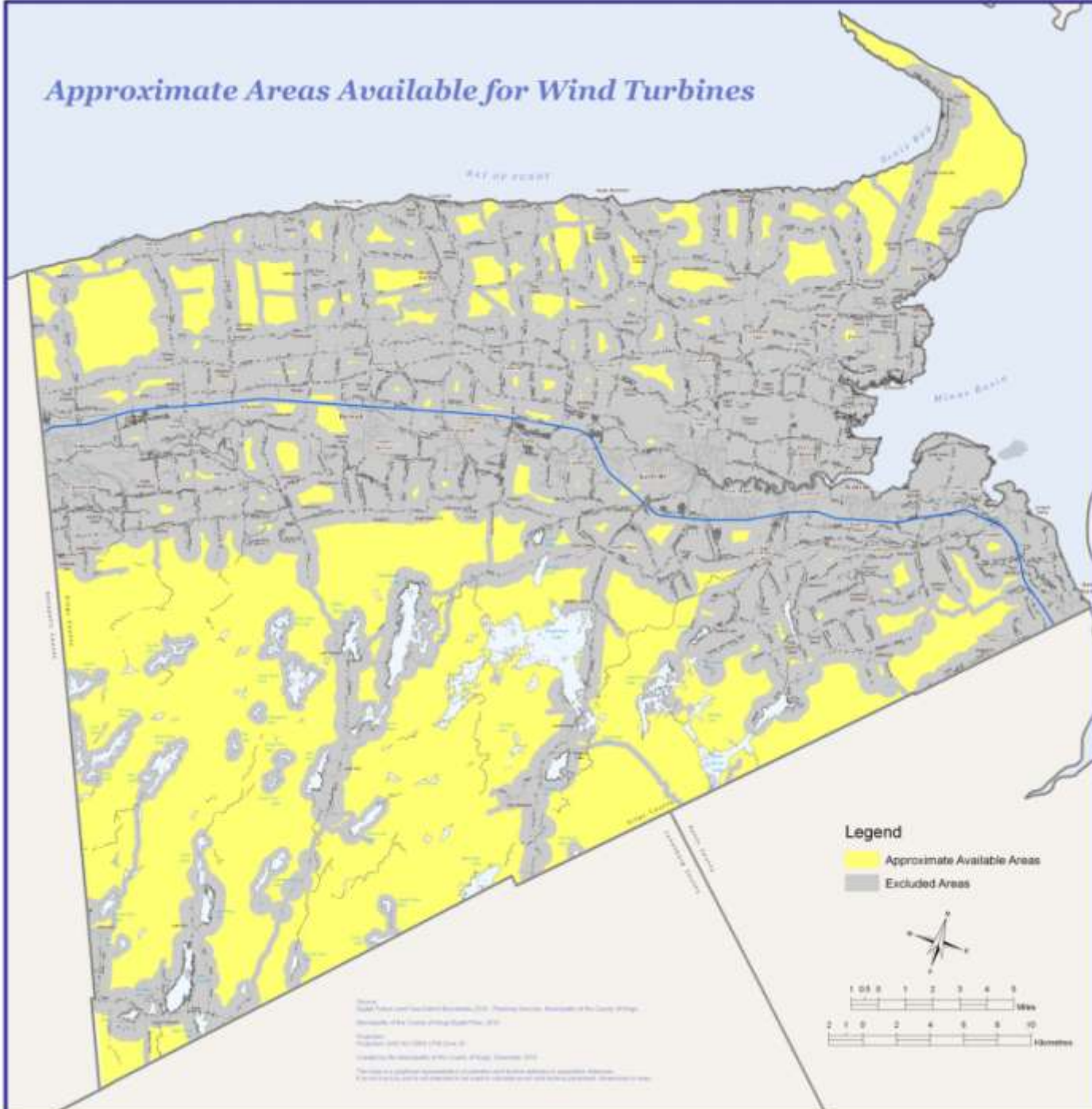
June 2011 – MPS Policies and LUB provisions enacted (as-of-right, 700 m separation distance)

December 13th, 2011 – PAC requests information and options regarding recent community concerns

December 20th, 2011 – COTW is updated about community concerns

January 10th, 2012 – PAC forwards a recommendation to Council

Approximate Areas Available for Wind Turbines



Source: Cape Cod Wind Energy Study, LLC. Planning Services, Incorporated for the County of Cape Cod.
Map of the County of Cape Cod, 2010.
Copyright: Cape Cod Wind Energy Study, LLC.
Created by the County of Cape Cod, 2010.
This map is a preliminary representation of information and is not intended to constitute a final plan.
It is intended for informational purposes only and is not intended to be used for any other purpose.

Options Presented to PAC

- Option A: Recommend that Council confirms its current policy
- Option B: Recommend that Council initiate a project to review the Municipal Planning Strategy
- Option C: Recommend that Council initiate a project to review the Land Use Bylaw

PAC Recommendation

The Planning Advisory Committee recommends that Municipal Council initiate a planning project concerning large-scale wind turbines by amending the Semi-Annual Work Plan, as described as Option B in the report dated January 10th, 2012.

Changes to Semi-Annual Work Plan

- **Addition of Item #8a - Large Scale Wind Turbines (P12-01)**
- **Revision of estimated end date for items #4 and #8**
- **Impact on Spring 2012 Semi-Annual Work Plan**

Project Timeline

Step	Projected Date (2012)	Description	Comments
1	February	Open House(s) & Questionnaire to inform and gather feedback from the public.	Optional consultation step recommended by Staff
2	April	PAC meeting/workshop to review results of the open house and provide direction on broad policy options.	Important for providing direction on the content of any amendments
3	May	PAC review of draft amendments	Required Step: an opportunity for PAC to make changes, request further information
4	June	Public Participation Meeting	Required consultation step
5	June	PAC recommendation to Council	Required step
6	July	Council: First Reading	Required step
7	July	Public Hearing	Required consultation step
8	August	Council: Second Reading	Required step
9	August to September	Provincial review of any MPS amendments	Required step

Additional Costs

- **Increased Advertising (\$2-3000.00)**
- **Optional Expertise (up to \$25,000.00)**
 - To review technical information and provide advice to Staff, PAC and Council

Potential Motion

“BE IT RESOLVED THAT MUNICIPAL COUNCIL AMEND THE SEMI-ANNUAL WORK PLAN BY ADDING ITEM #8A, CONCERNING LARGE-SCALE WIND TURBINES, AND AMENDING THE ESTIMATED COMPLETION TIME FOR ITEMS #4 AND #8 AS DESCRIBED IN APPENDIX A IN THE COUNCIL REPORT DATED JANUARY 17TH, 2012.”

Potential Motion Concerning Additional Funds

“BE IT RESOLVED THAT MUNICIPAL COUNCIL AUTHORIZES STAFF TO HIRE OUTSIDE EXPERTISE TO PROVIDE TECHNICAL INFORMATION AND ADVICE CONCERNING THE HEALTH AND ENVIRONMENTAL IMPACTS OF LARGE-SCALE WIND TURBINES AT A COST NOT TO EXCEED \$25,000.00.”